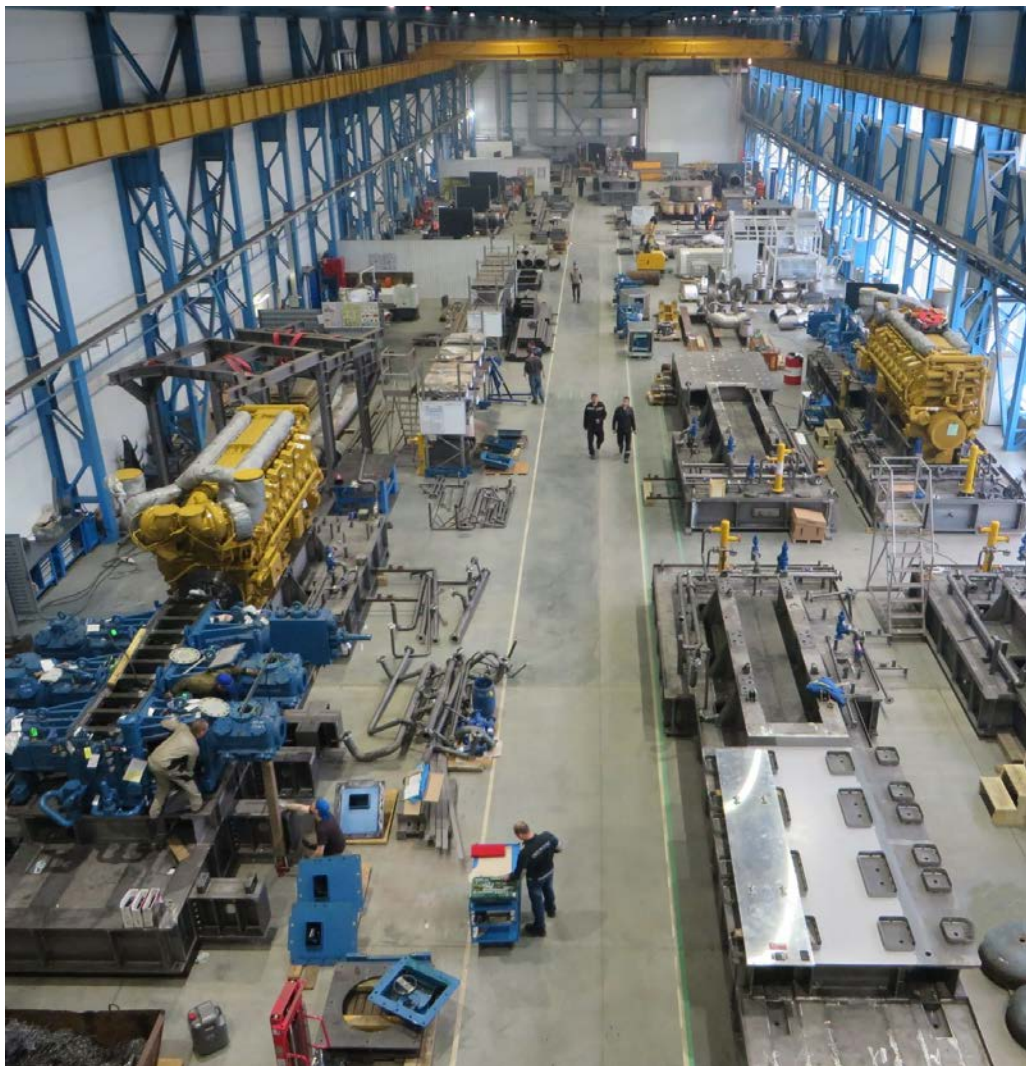


СПГ
конгресс



INGC Company

**MANUFACTURE OF MODERN ENERGY-SAVING COMPRESSOR
EQUIPMENT**



COMPANY TODAY

- Modern engineering and manufacturing company, founded in 2010

Area of the production facility

65 000 m²

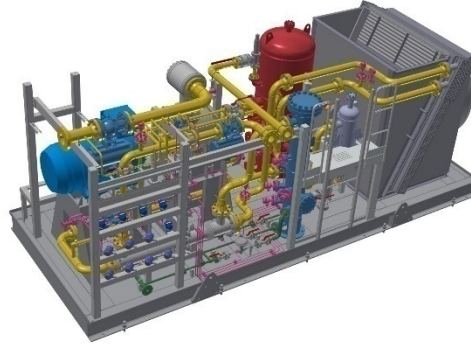
more than **350**
employees

- INGC is certified for compliance with SMK STO Gazprom 9001-2018
- Certification of INGC production for compliance with **ASME** standard has been undergone

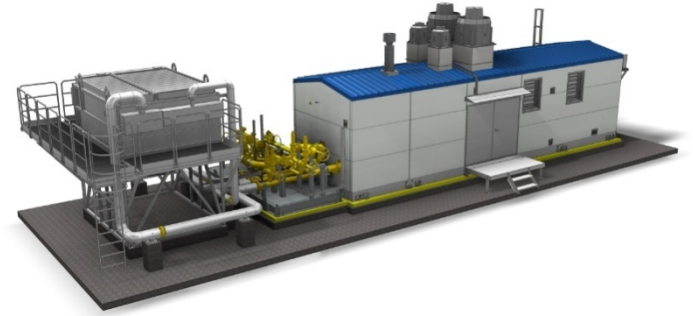
PRODUCT LINE



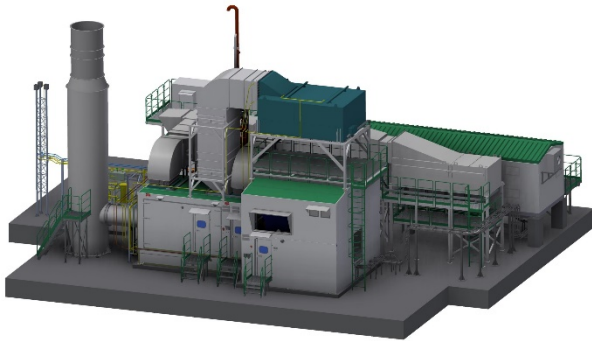
CENTRIFUGAL COMPRESSOR UNITS



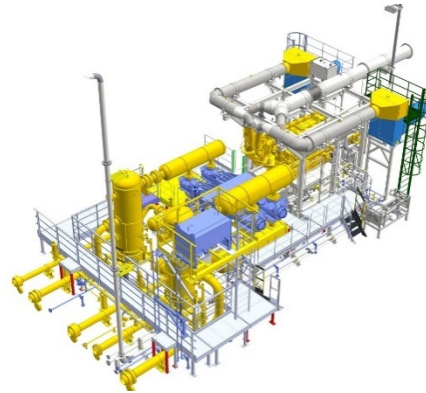
SCREW COMPRESSOR UNITS



PACKAGED EQUIPMENT



GAS TURBINE POWER UNITS



**RECIPROCATING
COMPRESSOR UNITS**



MODULAR COMPRESSOR UNITS

FROM 3D MODEL TO INSTALLATION

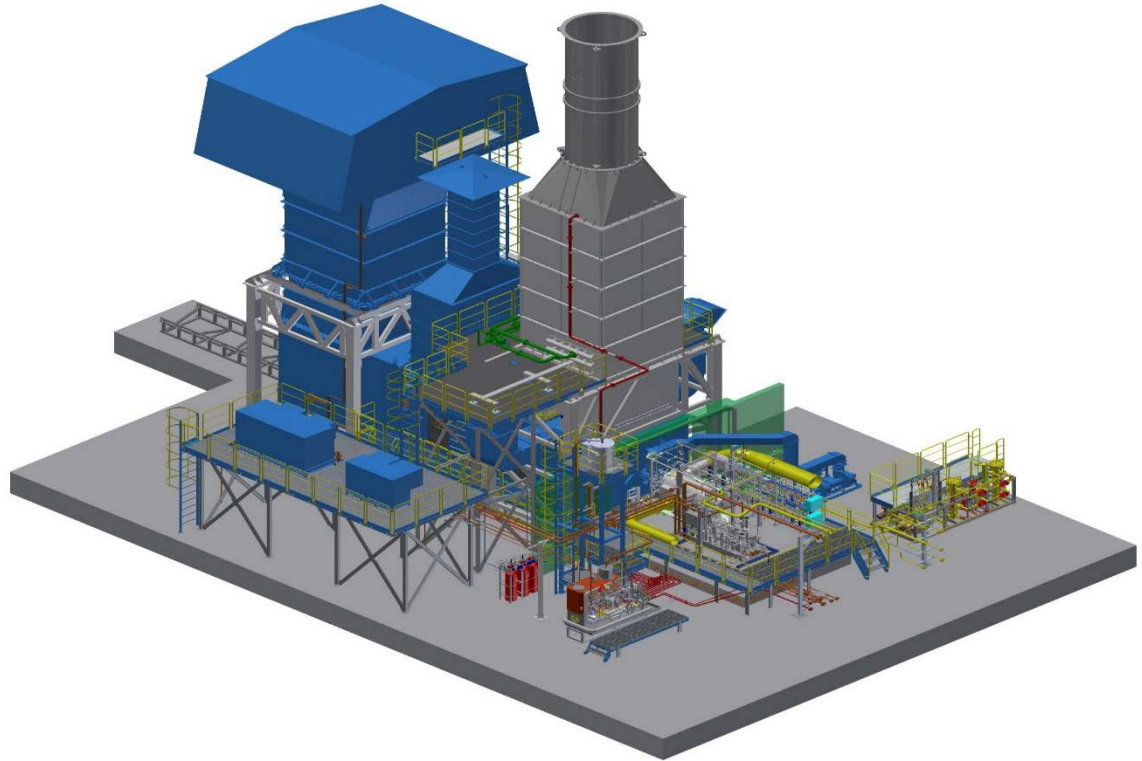
Natural gas compressor and de-ethanization gas compressor of Urengoy ZPKT

Gazprom Pererabotka LLC (Gazprom)

GPA-6 and GPA-10 Irtys- 2018

GTU-6 D-30 and PS-90,
Siemens compressor

3



Natural gas compressor and de-ethanization gas compressor of Urengoy ZPKT

Gazprom Pererabotka LLC (Gazprom)

GPA-6 and GPA-10 Irtysh- 2018

GTU-6 D-30 and PS-90,
Siemens compressor

3



FROM 3D MODEL TO INSTALLATION

Block-type compressor unit K107 for supply of associated petroleum gas, K117 – for dry gas compression

Otradnensky Gas Processing Plant JSC
(Rosneft PJSC)

JGC/4 – 2014 и JGT/4 - 2014

CAT G3608

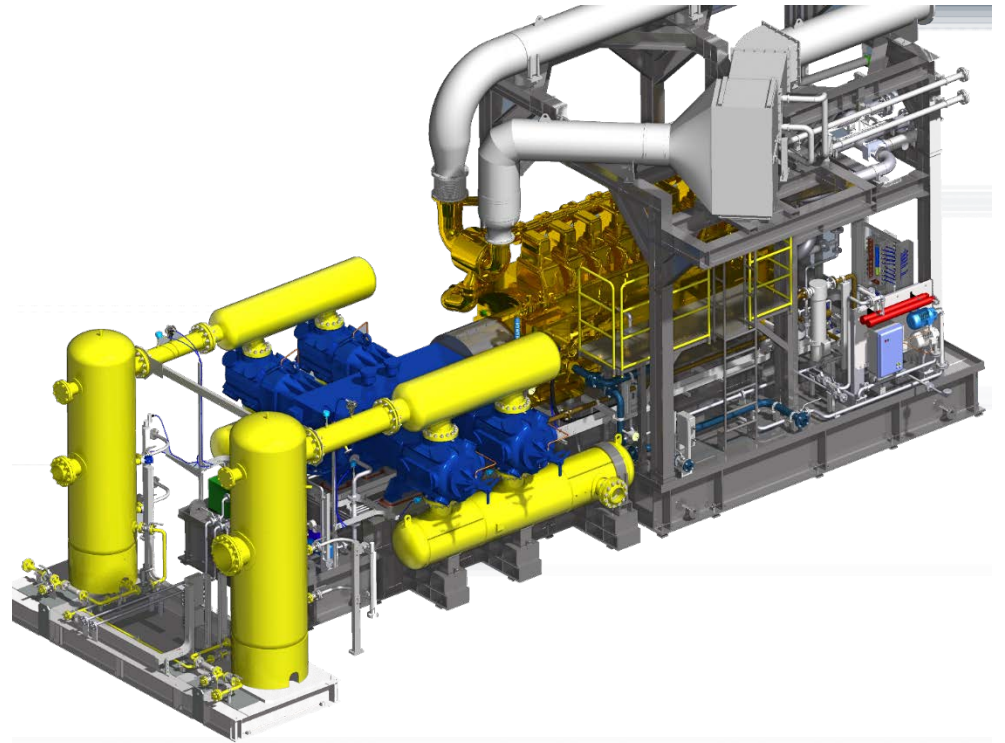
CAT G3520

1767

1286

3

2



Block-type compressor unit K107 for supply of associated petroleum gas, K117 – for dry gas compression

Otradnensky Gas Processing Plant JSC
(Rosneft PJSC)

JGC/4 – 2014 и JGT/4 - 2014

CAT G3608

CAT G3520

1767

1286

3

2



FROM 3D MODEL TO INSTALLATION

Povkhovskoe field, compressor station on BCS-2

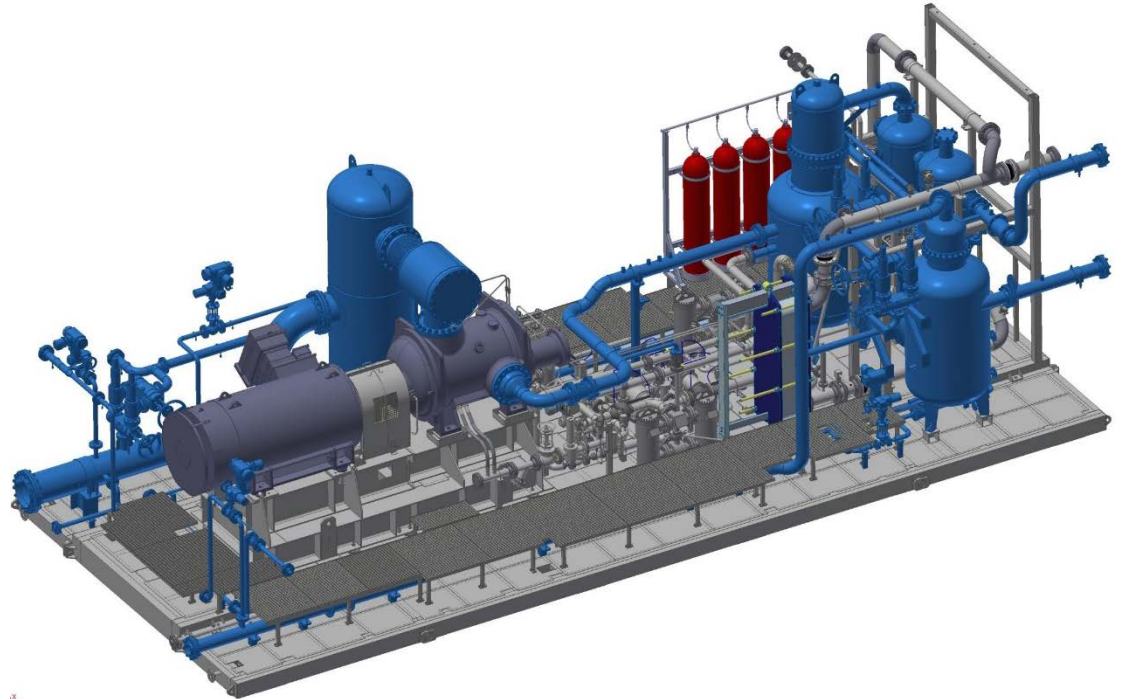
LUKOIL-Zapadnaya Sibir LLC

GEA VP-V36S – 2019

e/m Ruselprom

160

1



Povkhovskoe field, compressor station on BCS-2

LUKOIL-Zapadnaya Sibir LLC

GEA VP-V36S – 2019

e/m Ruselprom

160

1



FROM 3D MODEL TO INSTALLATION

Pre-packed gas turbine power units of modular type for Ichedinskoe field

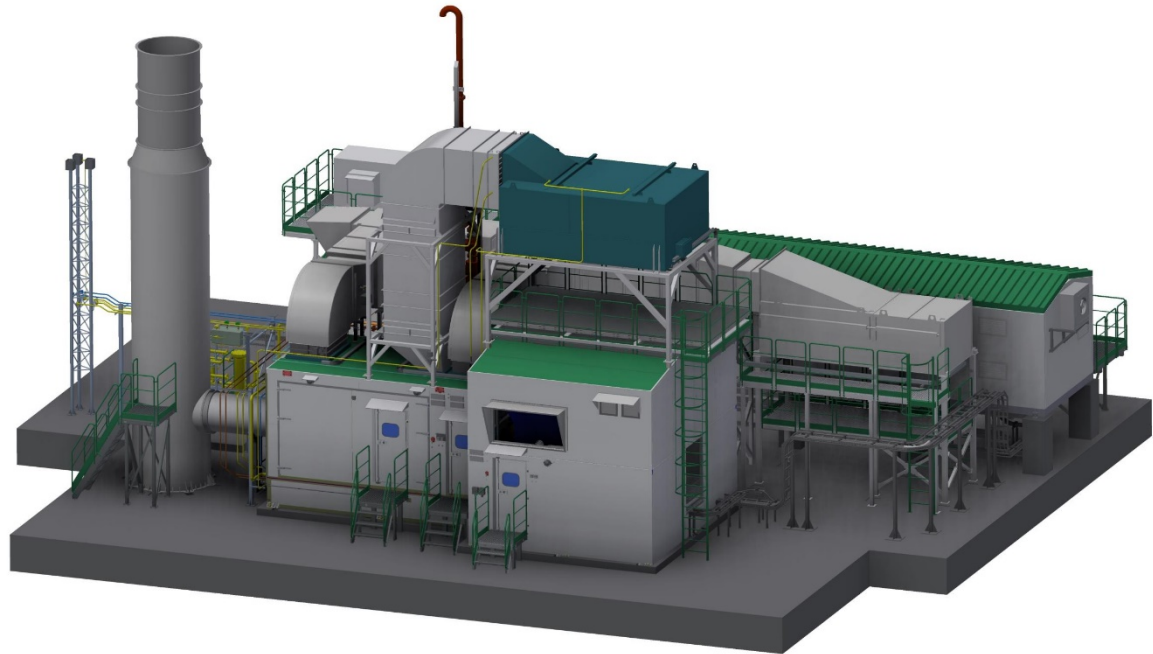
Irkutsk Oil Company LLC (IOC)

GS Taurus 60 GS - 2016

Solar Turbines, Taurus 60
5,7 MBт, 6,3 кВ

5700

2



Pre-packed gas turbine power units of modular type for Ichedinskoe field

Irkutsk Oil Company LLC (IOC)

GS Taurus 60 GS - 2016

Solar Turbines, Taurus 60
5,7 МВт, 6,3 кВ

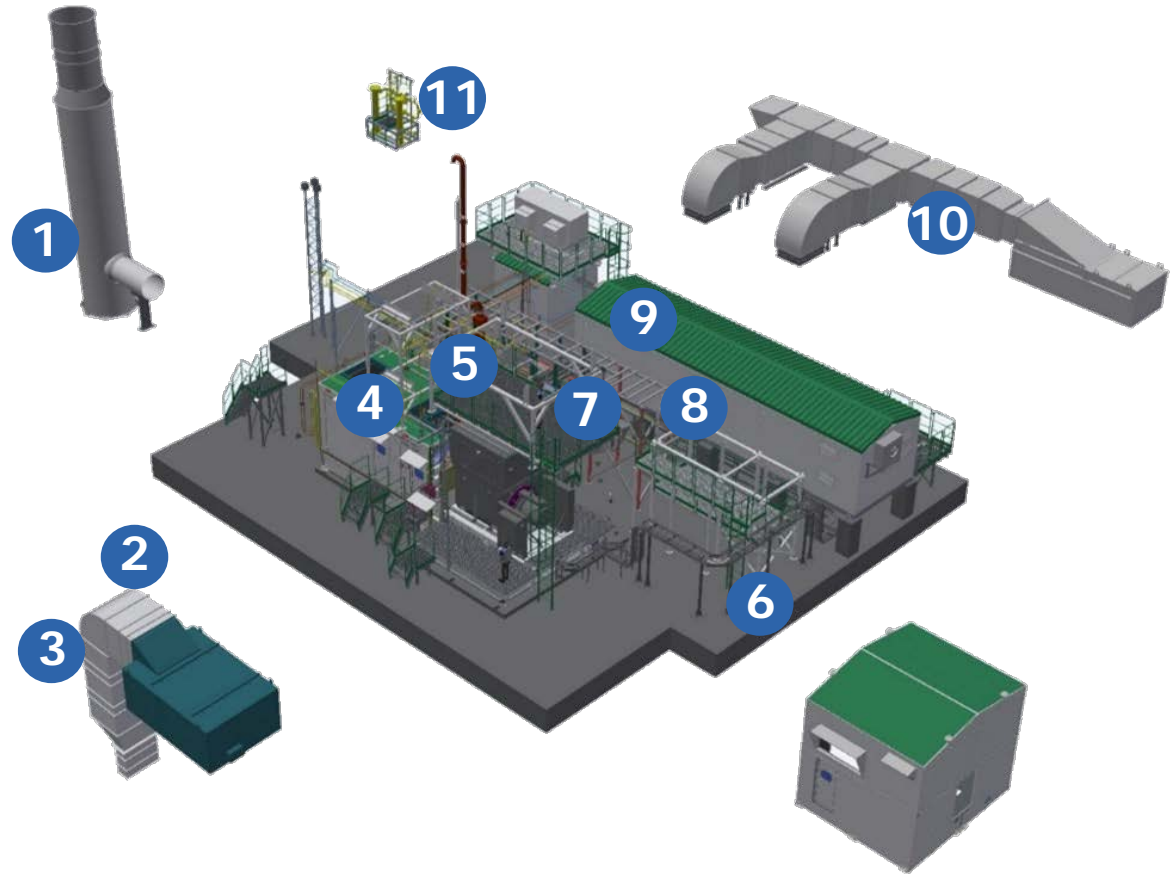
5700

2



REPAIR, MANUFACTURE OF COMPONENTS AND ELEMENTS OF A GCU / GTPP / CU

- 1 Exhaust system
- 2 Air intake system
- 3 Compensators
- 4 Compressor unit/ generator
- 5 Oiling system
- 6 Heating and ventilation system
- 7 Gas system
- 8 Automatic fire alarm system, , automatic fire fighting system, protective suits
- 9 Automatic control system
- 10 Driver cooling system
- 11 Fuel gas filter unit





CERTIFICATION

In view of new requirements of Gazprom PJSC in force since 2018, we have been performing an active phase of works on **certification of production and products of INGC LLC in INTERGAZCERT VCS:**

- An application has been sent to Gazprom PJSC for inclusion of INGC LLC products to the unified register of inventory of Gazprom PJSC
- Deliveries were executed to Gazprom Group: compressor set of Irtysh series (6 MW, 10 MW, and 16 MW), reciprocating compressor unit
- Certificate was issued on **Compliance with the Quality Management Systems (QMS) in INGC LLC to the Requirements of STO Gazprom 9001-2018**
- Certificate has been received on **commercial goodwill appraisal (CGA)**
- **Pilot testing** was performed within the agreement with VNIIGAZ Certificate CC for commissioned compressor units of Irtysh series 6 and 10 MW at Urengoy ZPKT of Gazprom Pereparabotka LLC
- Certificate was received on Production Compliance to the Standard of **ASME (certificate U №58452 – valid up to 17.01.2023)**

Besides, INGC LLC has Certificates on **Compliance with Requirements of ASME, ISO 9001-2015, OHSAS, etc.**



The American Society of Mechanical Engineers



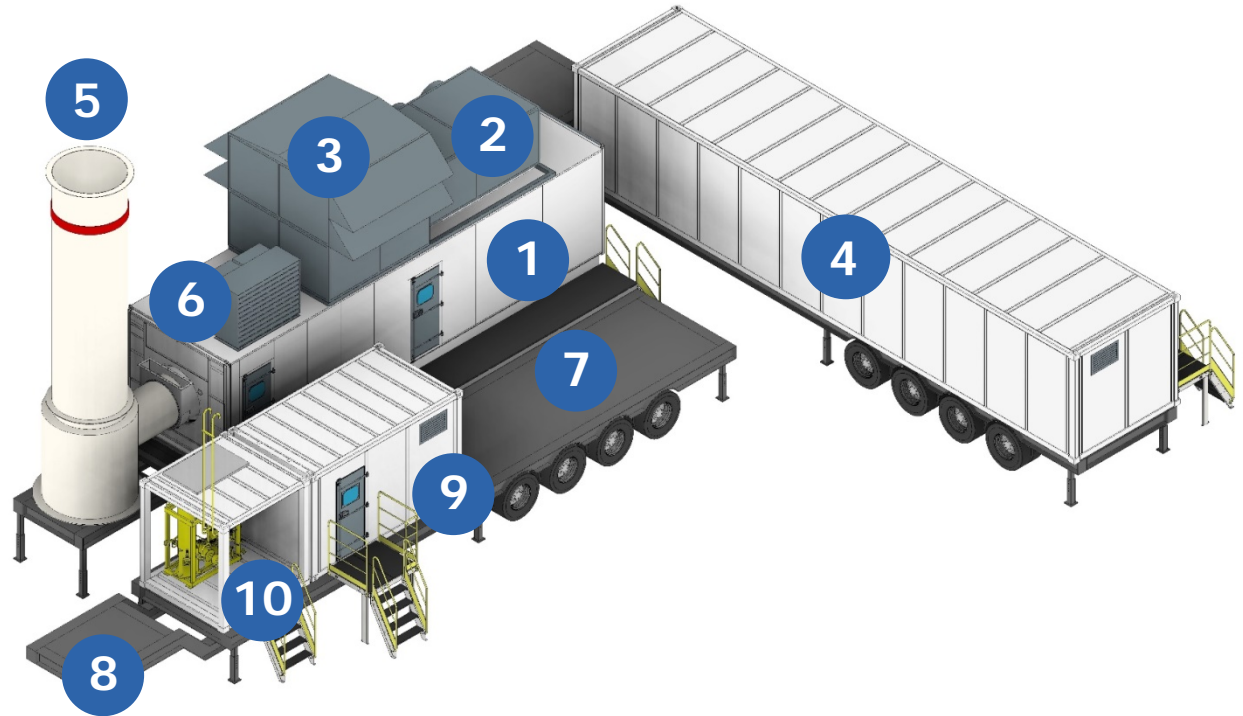
RUSSIAN REGISTER OF CERTIFICATION SYSTEMS



Аккредитовано сертификацией "Российский Регистр" по Решению Коллегии в 373, Санкт-Петербург, 19/12/2014, RU012, Россия

THE MOBILE POWER GENERATION UNITS

- 1 GTU and generator unit
- 2 Enclosure cooling system
- 3 Air-intake system
- 4 Electrical unit
- 5 Exhaust system
- 6 Air-cooling unit
- 7 Platform
- 8 Chassis
- 9 Start-up diesel generator
- 10 Fuel gas preparation unit



MODULAR COMPRESSOR UNIT (MCU)

Integrated solution for gas pumping from main gas pipelines under repair

- MCU consists of two main modules.
- The modules are transported by towing cars with semi-trailers, and are assembled on pre-prepared sites.
- To connect the modules between themselves and to gas pipeline, we use quick-detachable connections.



ADVANTAGES AND DISADVANTAGES

INNOVATIVE AND CONVENTIONAL MODULAR COMPRESSOR UNITS

Innovative approach - ICL

Advantages:

- ✓ Modular installation on a single framing, including air cooler
- ✓ Pre-fab ready-to-operate version "connect and use"
- ✓ There is no large scope of pre-commissioning activities
- ✓ Pre-fab ready-to-operate version "connect and use"
- ✓ Maximised periods between maintenance and overhaul
- ✓ No emissions or gas leak
- ✓ Dry gas – with no oil vapour
- ✓ No oil in drainage condensate
- ✓ No oil system

Disadvantages:

- –



Conventional approach - SCU

Advantages :

- ✓ Conventional proved design

Disadvantages :

- Condensate formation in oil is possible
- Maintenance of an oil system
- Cleaning gas from oil is required
- Maintaining oil system is required
- Short periods between maintenance and overhauls
- Low energy-saving





Key areas of INGC cooperation with companies of GAZPROM Group, owners of gas filling stations, producers of CNG and LNG, owners of LNG production technologies, and gas-to-chemicals plants

1. Production and delivery (for current operations and new construction):

- GPU of Irtysh series – up to 32 MW (on the basis of compressors and drivers – domestic and foreign);
- Reciprocating compressor units - up to 16 MW;
- Modular fully packed gas filling stations on the basis of reciprocating compressors;
- Centrifugal compressor blocks of Irtysh series- up to 32 MW;
- Centrifugal compressors for technological gases;
- Screw compressor units – up to 3 MW;
- Portable gas turbine power plants – up to 25 MW;
- Portable compressor units for discharge of MGP sections during different scopes of overhaul works;
- Modular compressor units for low pressure gas compressing (on the basis of centrifugal motor-driven compressor “ICL” with EM with HR)

2. Minor repairs and overhaul of separate units or elements of GPU (integrated air intake unit, exhaust system, compensators, oiling systems etc.)

3. Maintenance and repair; servicing and deliveries of SPTA



SALES AND ENGINEERING

14 Nauchny proezd, litera A,
bld. 3, Moscow, Russia, 117246
Tel.: +7 495 231 46 73 / 61
info@ingc.ru

PRODUCTION AND DESIGN BUREAU

92 Novogaivinskaya St,
Perm, Russia, 614030
Tel.: +7 342 205 79 50
info.perm@ingc.ru

ingc.ru